

# CA 2E and CA Plex

June 2016

FOR INFORMATION PURPOSES ONLY

# Terms of this presentation

This presentation was based on current information and resource allocations as of May 2016 and is subject to change or withdrawal by CA at any time without notice. Notwithstanding anything in this presentation to the contrary, this presentation shall not serve to (i) affect the rights and/or obligations of CA or its licensees under any existing or future written license agreement or services agreement relating to any CA software product; or (ii) amend any product documentation or specifications for any CA software product. The development, release and timing of any features or functionality described in this presentation remain at CA's sole discretion. Notwithstanding anything in this presentation to the contrary, upon the general availability of any future CA product release referenced in this presentation, CA will make such release available (i) for sale to new licensees of such product; and (ii) to existing licensees of such product on a when and if-available basis as part of CA maintenance and support, and in the form of a regularly scheduled major product release. Such releases may be made available to current licensees of such product who are current subscribers to CA maintenance and support on a when and if-available basis. In the event of a conflict between the terms of this paragraph and any other information contained in this presentation, the terms of this paragraph shall govern.

Certain information in this presentation may outline CA's general product direction. All information in this presentation is for your informational purposes only and may not be incorporated into any contract. CA assumes no responsibility for the accuracy or completeness of the information. To the extent permitted by applicable law, CA provides this presentation "as is" without warranty of any kind, including without limitation, any implied warranties or merchantability, fitness for a particular purpose, or non-infringement. In no event will CA be liable for any loss or damage, direct or indirect, from the use of this document, including, without limitation, lost profits, lost investment, business interruption, goodwill, or lost data, even if CA is expressly advised in advance of the possibility of such damages. CA confidential and proprietary. No unauthorized copying or distribution permitted.

# Application Development Portfolio Product Management

## **Steve Solomon**

CA 2E and CA Plex, Product Manager

Tel: +1-480-657-4231

[Steven.Solomon@ca.com](mailto:Steven.Solomon@ca.com)

## **Dana Boudreau**

Senior Director, Product  
Management

Tel: +1-919-379-9161

[Dana.Boudreau@ca.com](mailto:Dana.Boudreau@ca.com)

## **Aline Gerew**

SVP, Software Engineering  
Application Development Portfolio

Tel: +1-508-628-8093

[Aline.Gerew@ca.com](mailto:Aline.Gerew@ca.com)

# CA Product Management Intentions

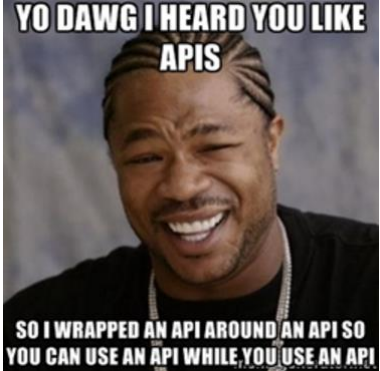
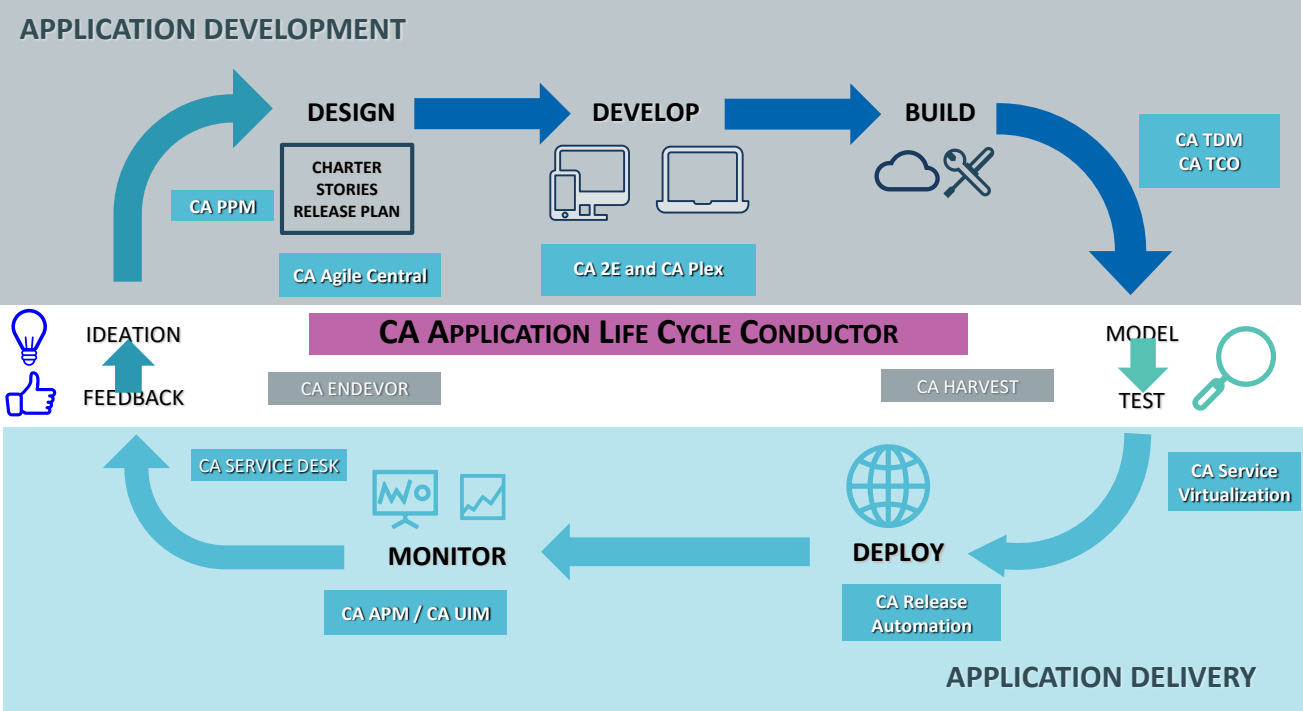
- CA 2E
  - After CA Plex release work on a new release of CA 2E
    - Cumulative role up of PTFs (Fixes)
    - Certifications on latest operating systems
    - Customer Requests
- CA Plex
  - CA Plex 7.2.1 in process
  - End to End DevOps
  - Customer Requests
  - Free single user version
  - Explore Open Source and Community Development
  - Add features to help customers migrate from CA 2E



# Application Development Portfolio

## End to End DevOps

DevOps integration targets feature development, product delivery, quality testing, and maintenance releases in order to improve reliability and security and faster development and deployment cycles.






# Hands-On Sessions using Skytap Images

- We have **20** Skytap images available that will be used for the following sessions:
  - API Design with CA Plex
  - Build CA Plex XAML UI – Advanced Training
  - CA Plex from C++ to C#/.NET
- E-mail [Robert.Layzell@ca.com](mailto:Robert.Layzell@ca.com) to receive your personal Skytap URL
- Images will be available until **Friday June 3<sup>rd</sup> @ 6pm CT**
- Images contain:
  - All training materials and documentation for above hands-on sessions
  - CA Plex r7.2 GA
  - Visual Studio 2005, 2013, 2015
  - SQL Server 2012
  - Access to a personal CA API Gateway v8.3 instance

# CA Plex and CA 2E Customer Requests



Title	Author	Latest activity	Views
 Native string handling routines. 54 <b>WISH-LISTED</b>	jstent1.1	December 14, 2015 4:12 PM	402
 EXEC SQL support for IBMi 43 <b>UNDER REVIEW</b>	leed	September 1, 2015 1:24 AM	435
 Plex version for non-commercial use 40 <b>WISH-LISTED</b>	JohnConvoy	April 18, 2016 2:32 PM	520
 RPGIV - Support Date and varchar data types in RPGIV generator 39 <b>WISH-LISTED</b>	CharlesWilt	December 14, 2015 4:14 PM	455
 Automatically remove triples for deleted calls 37 <b>WISH-LISTED</b>	DAVID GAMBLE	March 23, 2016 8:02 AM	217

- The More Votes the Better
  - We will review at least every month and review ideas updated in the last 90 days
  - The better the explanation of the requirement the better odds of being accepted
- Status meanings:
  - Wish-Listed – There are enough votes to add this to the product backlog
  - Under Review – We will review for ROI for multiple customers
  - Currently Planned – It is targeted for a Release
  - Not Planned – We did not like the idea, We did not understand the idea, or it does not fit in the current strategic direction – You may appeal

# Leverage CA Partners – 28 Global Partners

- CM First
  - CM First has several products to help you modernize your application (I am sure they will provide full details while you are here)
- Websydian
  - Transform your Plex or 2E application from green screen or GUI to a dynamic web application making it faster, more accessible and more intuitive to work with.
  - Websydian Ext JS – web for Plex
  - Websydian TransacXML – web services for Plex
  - WebsydianExpress for 2E – web for 2E
  - WebsydianExpress for RPG – web for RPG





# Customer Advisory Board (CAB)



- I need your success stories
- To manage the products correctly I need to know not just what you are using CA 2E and CA Plex for I need to know where your organization is going and what technologies you are looking to exploit in the future
- You will need to be able to meet and share with ideas and strategies with your peers (and maybe competitors). Proprietary information should not be shared.



# CA Plex 7.2.1

# Plex r7.2.1

## Features & certification targeted

- Product upgrade with Visual Studio 2013
- EJB 3.x support
- .Net 4.5.2/4.6 support (latest & stable)
- Java Control ID
- Windows 10 support
- SQL Server 2014 support
- Merging fixes from earlier releases



Disclaimer: The above listed items may vary according to change in scope or priority.

# Visual Studio 2013 Upgrade

New Plex runtime binary version will be - **721** (e.g. Ob**721**lc.dll)

Long standing request

- Current scope - upgrading Plex IDE, WinC, WinNTC
- ..Next to target VS capabilities/offerings within Plex.
- ..Opens scope to integrate with new third parties

- Need to regen/rebuild your model
- No runtime backward compatibility
- No major Pattern library changes
- Improved runtime performance

ADDebugClient	5/26/2016 1:22 AM
ADDebugNTServer	5/26/2016 1:22 AM
Migration2	5/26/2016 1:25 AM
ob721bc	5/26/2016 1:23 AM
ob721BM	5/26/2016 1:18 AM
ob721CB	5/26/2016 8:07 AM
ob721DC	5/26/2016 1:19 AM



# EJB 3.x support

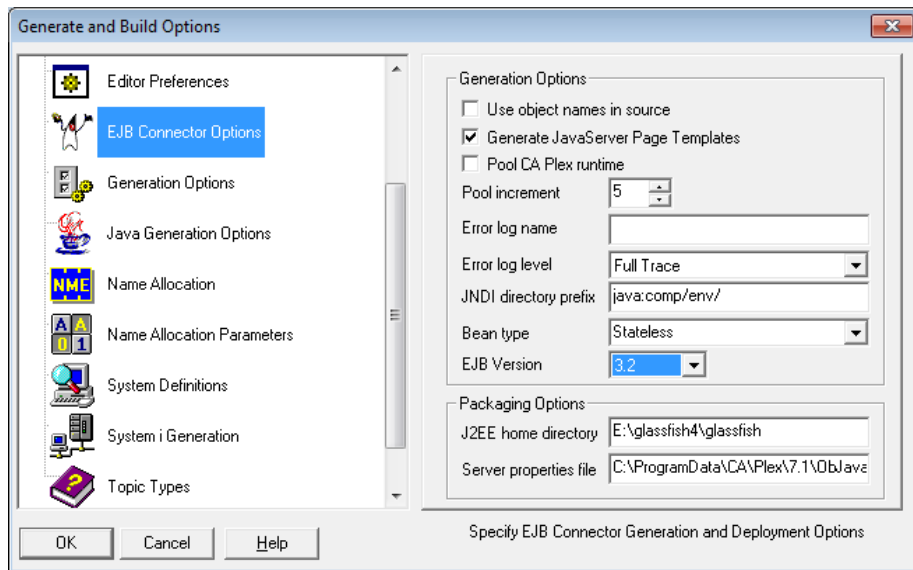
CA Plex side changes towards EJB 3.x support:

- Gen/Build window option got changed to EJB version 3.2
  - “EJB Connection Option” -> “EJB Version”
- Reference implementation changed from **j2sdkee1.3** to **glassfish**
- Instead of Java old packager tool (part of J2ee 1.3) to create build EAR file, now using ANT script.



Note: Plex generated EAR file should be compatible with any APP Server which compliance with EJB 3.x implementation.  
App Server - Glass Fish (Oracle), Wildfly (JBOSS), IBM WebSphere certified.

# Gen/Build window option changed to EJB version 3.2



```
@Stateless
public class SLgCBean implements SLgCRemote {

    private SessionContext m_sessionContext;

    private InitialContext m_ctx;

    private String m_path;

    @PostConstruct

    public void ejbInitialize() {

        //System.out.println("EJB SLgC Started!");

        // Initialize the Plex application context
```

## Generated code supports Annotations

```
<?xml version="1.0" encoding="UTF-8"?>
<ejb-jar version="3.2" xmlns="http://xmlns.jcp.org/xml/ns/javaee" xmlns:xsi="http://www.w3.org/2001/XMLSchema-instance"
xsi:schemaLocation="http://xmlns.jcp.org/xml/ns/javaee http://xmlns.jcp.org/xml/ns/javaee/ejb-jar_3_2.xsd">
```

# Demo

- IDE changes
- Runtime (WinC/WinNTC) changes
  
- Sample Sales System model (WinC/ODBC)
- Sample COM Import



Questions?





---

## Steve Solomon

Sr. Principal Product Manager

Steven.Solomon@ca.com



in